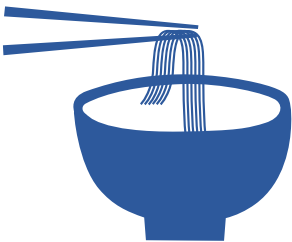
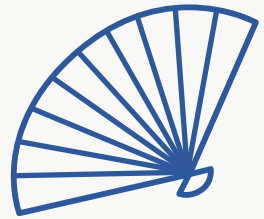
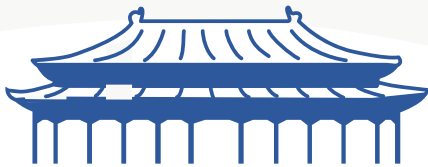



CHINESE WINTER CAMP PROGRAMS

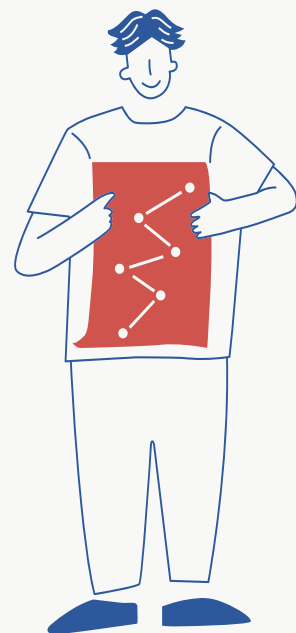
2023-2024



www.wintercampschina.com



Since 2008, That's Mandarin's Winter Chinese Camp has been delivering a first-class Chinese learning experience to thousands of kids and teens in Beijing and Shanghai.



100,000+

STUDENTS

Since the establishment in 2005, That's Mandarin Chinese Language School has served 100,000+ students on their journey to mastering Chinese.

100+

OVERSEAS ORGANIZATIONS

Over the years, we've worked with various establishments to organize trips & summer camps for overseas students.

10,000+

CAMPERS

Our Chinese Camps in Beijing and Shanghai have hosted a total of more than 10,000 campers from all over the world.

16+

YEARS OF CAMP

Our Chinese Summer and Winter Camps prove to be a popular choice year on year since the first program in 2008.



Safety First

The safety of your child is our paramount concern. Rest assured your child is safe with us!



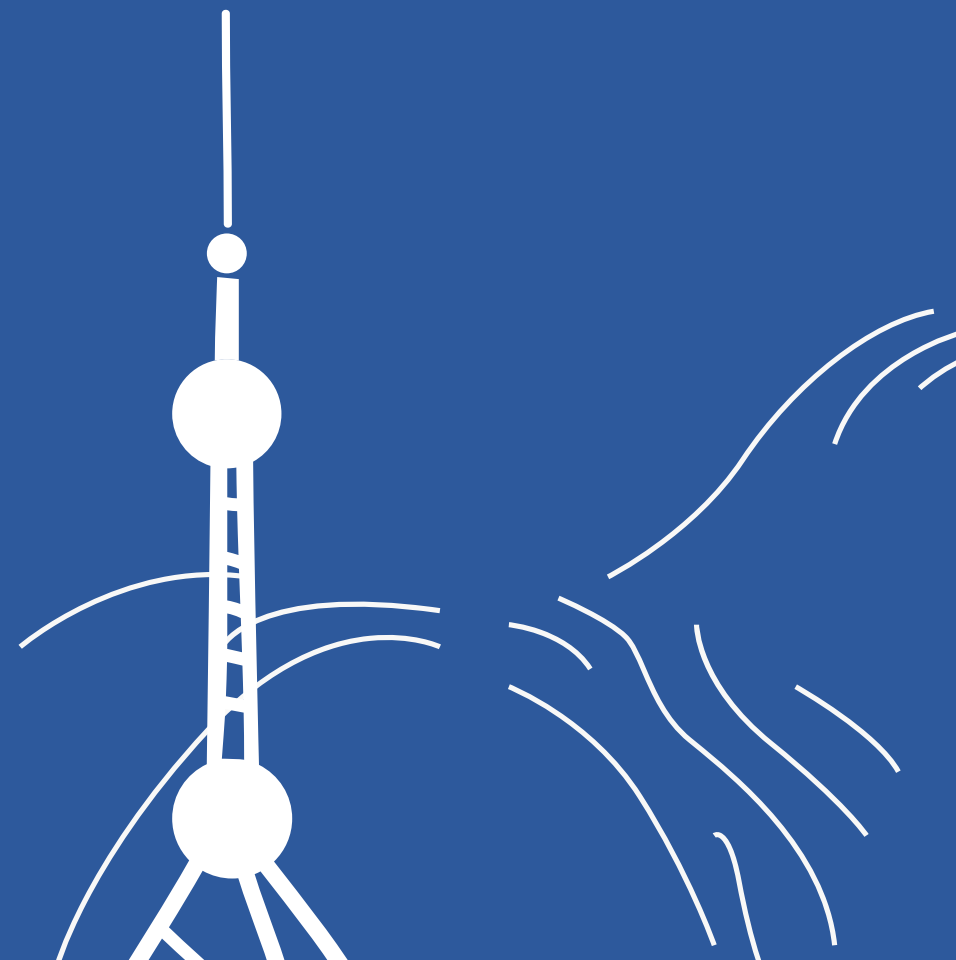
Professional Teachers

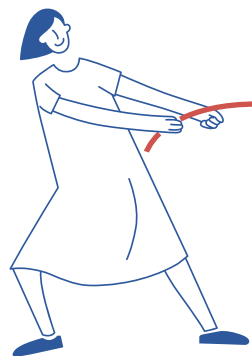
Our talented and enthusiastic teachers are all experienced working with under 18s.



Fun! Fun! Fun!

Our activities are engaging, inspiring and fun, with an emphasis on being educational and, above all, safe!





1

How We Compare to Other Camps



That's Mandarin

At least 1 teacher is in charge of every 6 students.

An average of 6 students per class.

Emphasis on oral fluency through fun games and activities.

Students will play games and complete tasks while on field trips.

Students' learning progress and materials can be accessed via our online learning system.

None. What you see is what you get.

Safety During Excursions

Smaller Group Size

Chinese Lessons

Field Trips

Learning Resources

Hidden Fees

Other Schools

Only 2 teachers are in charge of the whole group (usually 20-30 kids).

An average of 20-30 students per class.

Traditional, textbook-based classes.

Field trips are often organized by a travel agency with no learning activities.

Reports are in paper format and study materials are traditional textbooks.

Books fee, registration fee, handling fee, visa fee.



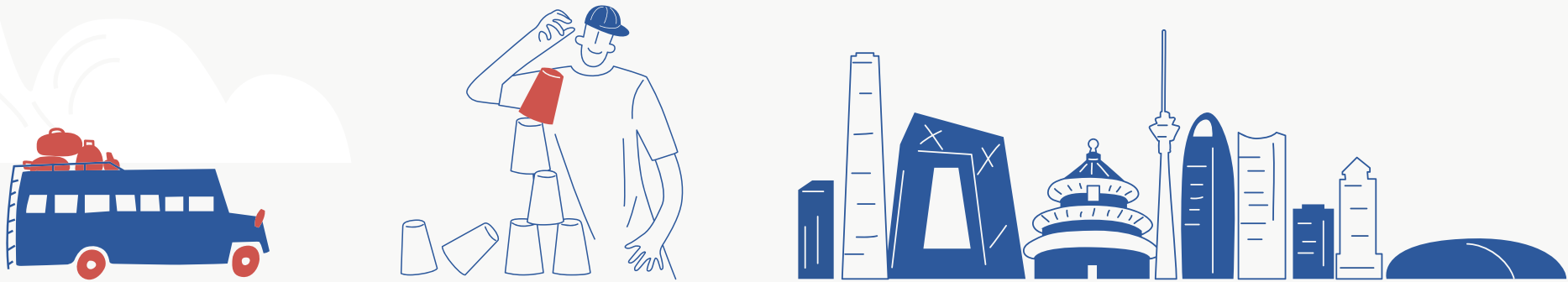


2023-2024 CHINESE WINTER CAMP PROGRAMS

4 EXCITING OPTIONS TO CHOOSE FROM



In addition to regular Chinese classes and cultural activities, we offer tailor-made camp all year round that is especially suited to each family member's needs and requirements



	CONTENT	SUITABLE FOR	TIME	SCHEDULE	SERVICE PACKAGE	ACCOMMODATION	
HALF-DAY CAMP	Chinese Lessons	Children aged 7-17 whose parents are in/not in China	1pm — 3:50pm	Mon — Fri	Lunch	Not included*	Intensive Chinese study with a wide mix of interactive classes
DAY CAMP	Chinese Lessons + Cultural Activities + Field Trips + Lunch	Children aged 7-17 who are interested in both Chinese language & culture	9am — 3:50pm	Mon — Fri	Lunch	Not included*	Explore Chinese language and culture with classes, cultural activities, and field trips
HOMESTAY CAMP	Chinese Lessons + Cultural Activities + Field Trips + 3 Meals Per Day + Homestay + Evening & Weekend Activities	Children aged 12-17 who would like to live with a local family during their stay in China	9am — 3:50pm + Evenings & weekends with the host family	Mon — Sun	Airport Pickup & Drop-off Lunch Breakfasts & dinners with the host family	Homestay Family	Stay with a local family and have a closer look at Chinese people's daily life
FAMILY CAMP	Day Camp for children & Chinese Program for parents	Children aged 7-17 who would like to study Chinese together with their parents	9am — 3:50pm (kids) 8:30am — 12:00pm (adults)	Mon — Fri	Lunch (kids)	Not included*	Join your kids for an enjoyable Chinese learning experience

*Accommodation is not included, but is available upon request.

3 Extras



Online Chinese School for Kids & Teens

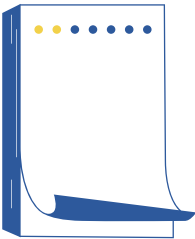
Learn Chinese anytime, anywhere you want before and after Winter Camp. We provide high quality online lessons to students from all over the world using our learning platform NihaoCafe.




China School Trip

Looking for a school trip organizer to offer your students a unique study-travel experience in China? Overseas educators and schools put their trust in That's Mandarin to organize an enriching Chinese trip for their students. Visit www.chinaschooltrip.com for more information.

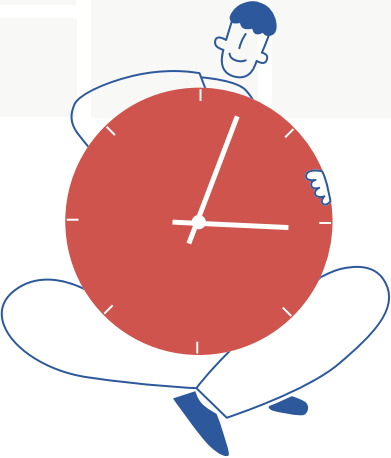
4 Sample Camp Schedule



	MON	TUE	WED	THU	FRI	SAT	SUN
9:00 — 10:00 AM	Review & Warming Up for the Upcoming Activity / Excursion					<div>WEEK 1</div> Weekend Field Trip <div>WEEK 2</div> Supervised Free Time	<div>WEEK 1</div> Rest <div>WEEK 2</div> Traveling Home
10:00 AM — 12:00 PM	<div>WEEK 1</div> Opening Ceremony <div>WEEK 2</div> On-campus Cultural Experience	Daytime Excursion / Off-campus Cultural Experience	On-campus Cultural Experience	Daytime Excursion / Off-campus Cultural Experience	On-campus Cultural Experience		
12:00 — 1:15 PM	LUNCH						
1:15 — 2:00 PM	Chinese Class — Preparing for Activity / Excursion Vocabulary & Grammar				<div>WEEK 2</div> Sharing Camp Experience		
2:00 — 2:55 PM	Chinese Class — Preparing for Activity / Excursion Reading & Discussion				<div>WEEK 2</div> Closing Ceremony		
3:05 — 3:50 PM*	Chinese Characters Class						
4:00 — 5:00 PM	Playing Traditional & Modern Chinese Games (Full Camp only)						
5:00 — 6:00 PM	DINNER (Full Camp only)						
6:00 — 8:00 PM	Evening Activities (Full Camp only)						



*Day Camp activities finish at 3:50 pm.
*Homestay Camp students return to their host family at 3:50 pm.





2023-2024 CHINESE WINTER CAMP PRICING

	HALF-DAY CAMP	DAY CAMP	HOMESTAY CAMP	FAMILY CAMP
2 WEEKS	7,500 RMB	15,000 RMB	30,000 RMB	From 22,400 RMB*

*Family Camp package price depends on the type of Chinese classes for parents. The starting price includes Intensive Group classes from 8:30 am to 12:00 pm, Monday to Friday.



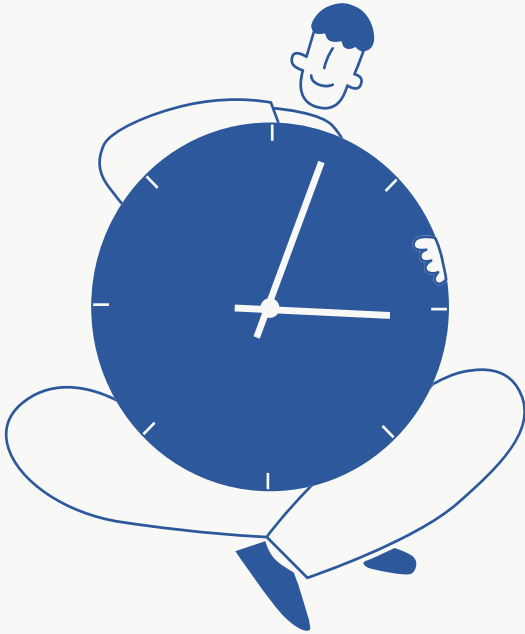
EARLY BIRD DISCOUNTS AVAILABLE

CONTACT US TO LEARN MORE



2023-2024 WINTER CAMP START DATES

- Nov 13
- Nov 27
- Dec 11
- Jan 8
- Jan 22





6 Contact Information

Beijing

+86 010 84489799

info@thatsmandarin.com

Xinzhong Street No. 12, Bldg 4, 3F

Dongcheng District, Beijing 100027, China

北京市东城区新中街乙 12 号 4 号楼 3 层

Shanghai

+86 21 6095-8317

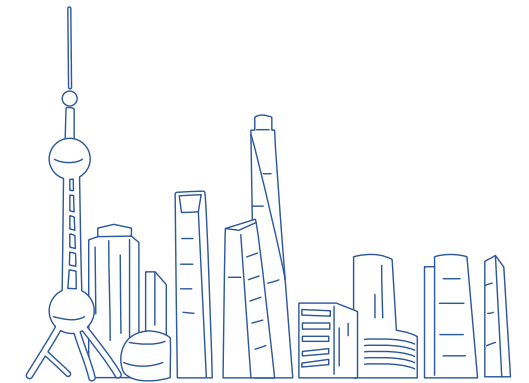
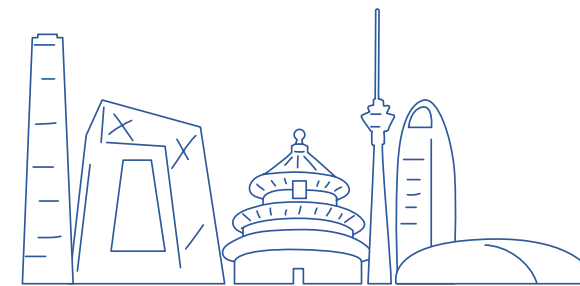
info.shanghai@thatsmandarin.com

Wuding Road No. 881, Bldg 1, 5/F, Jing'an

District, Shanghai 200040, China

上海市静安区武定路 881 弄 1 座 5 层

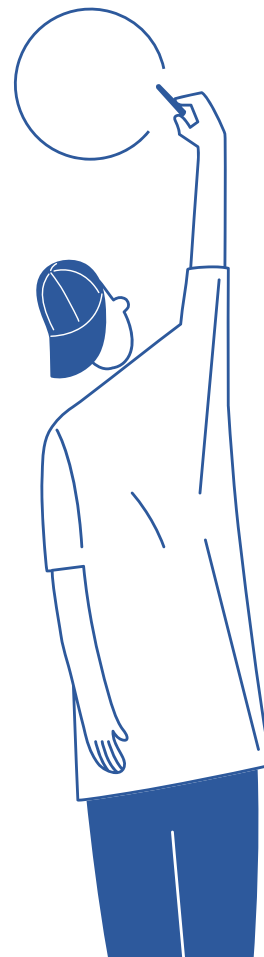
www.wintercampschina.com



5 Camp Program Time & Duration

Our Winter Camp programs run from **November to January**. The standard camp term is **2 weeks**.

If you would like to extend your program, you can add 2 more weeks in another city. For more information, please contact us directly.





Contact Us Today